

Embryonated eggs ingested by human host **i**

**7**

Oncospheres hatch, penetrate intestinal wall, and circulate to musculature **d**



**8**

Cysticerci may develop in any organ, being more common in subcutaneous tissues as well as in the brain and eyes



**9**

**Cysticercosis**

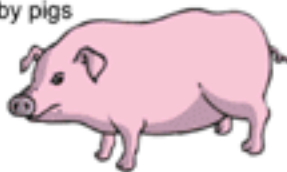
Oncospheres hatch, penetrate intestinal wall, and circulate to musculature



**3**

Embryonated eggs and/or gravid proglottids ingested by pigs

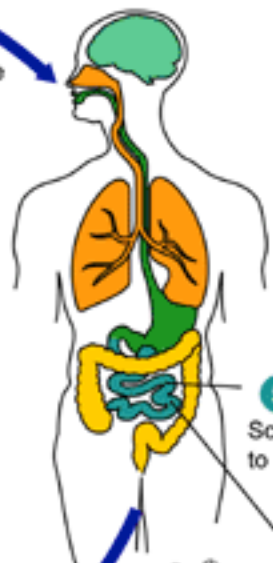
**2**



Humans infected by ingesting raw or undercooked infected meat **i**

**4**

Oncospheres develop into cysticerci in pig muscle

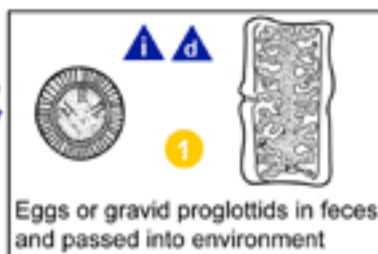


Scolex attaches to intestine **i**

**5**



Adults in small intestine **6**



Eggs or gravid proglottids in feces and passed into environment **1**

**i** = Infective Stage  
**d** = Diagnostic Stage